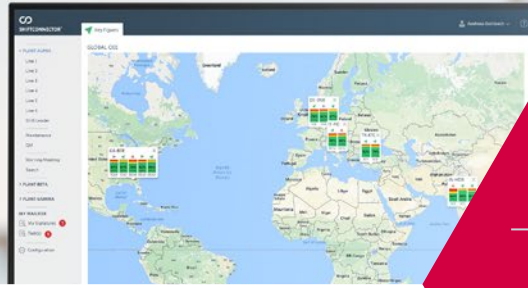


eschbach



  
SHIFTCONNECTOR®

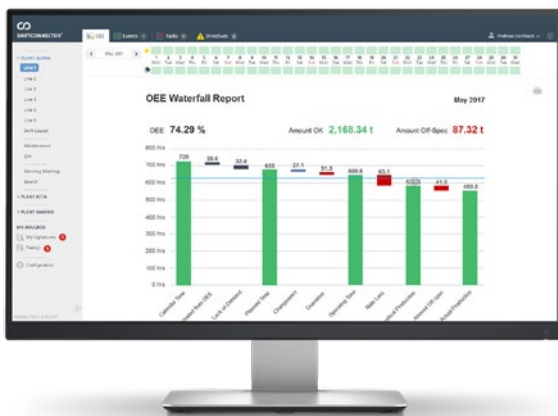


# Transparent Real-Time OEE

Simple OEE live analysis of target values, downtimes, quantities or batch cycle times for ever better performance.

io.Performance simplifies OEE capture in all production environments, including batch, semi-continuous, fully continuous and discrete manufacturing.

- **Standardize** methodology and reporting across the enterprise and connect all people, departments and systems involved.
- Losses in asset availability, speed and quality are **visible live** and can be analyzed by customized reports.
- Cross-departmental and cross-hierarchy access to role-specific functions and support for **Total Productive Maintenance (TPM)**.
- **Connection** to Process Historian (e.g. OSIsoft® PI, Aspen InfoPlus.21®) and ERP (e.g. SAP®, IBM Maximo®).
- Recognition of complex relationships between losses and **prediction of recurring problems**.
- Dynamic recognition of bottlenecks and identification of common vs. special cause variations in a **clear batch monitor**.
- **Easy to use** through automatic preselection of loss categories.
- Global harmonization enables the use of business intelligence tools – a starting point for **predictive maintenance**.



Benefit from maximum uptime and innovative features in our **cloud solution**.

+49 (0)7761 55959-0  
info@eschbach.com

© eschbach. For more information, visit [eschbach.com](http://eschbach.com)



Microsoft  
Partner